
The London Community Foundation

Cathy Togher, programme manager

**The London
Community
Foundation**

The London Community Foundation

- A modern grantmaking trust for London
 - Established in 1995
 - Given away £35+ million in over 5,000 grants mainly across London
 - Focus on smaller charities and community organisations
- Fundholders include
 - Companies - Land Securities, Deutsche Bank, JP Morgan, Shell
 - Individual and Family donors
 - Local and national government
 - Charitable trusts – Comic Relief, Big Lottery, Evening Standard

Grants

LCF administers a range of grants schemes right across London. Our aim is to be a supportive and approachable funder. Some of our grant schemes include:

- Comic Relief
- Evening Standard Dispossessed Fund
- Sport Relief

Always check our website and sign up for our grants e-bulletin as our programmes change regularly

Grants Programmes for Wandsworth

- Wandsworth Community Fund
- Covent Garden Market Authority Community Fund
- Southfields Community Fund
- Sports Relief / Comic Relief

Other pan London programmes are also available in the borough

Wandsworth Community Fund

- ❑ Improve opportunities for children and young people with an emphasis on early intervention and preventative work and increasing the levels of educational attainment for children, young people and adults
- ❑ Making the London Borough of Wandsworth an attractive, safe, sustainable and healthy place
- ❑ Providing personalised and preventative care and support to adults in need
- ❑ Building a prosperous, vibrant and cohesive community

Online application – www.londoncf.org.uk

Open for applications June 2013

CGMA Community Fund

To support projects being delivered in the immediate vicinity of the New Covent Garden Market and Vauxhall Nine Elms Battersea Opportunity Area.

The four themes are:

- ❑ Food & Growing;
- ❑ Enterprising Communities and supporting job creation;
- ❑ Supporting young people at risk;
- ❑ Tackling elderly isolation and exclusion.

Online application www.londoncf.org.uk

Currently open for applications

**The London
Community
Foundation**

Southfields Community Fund

To support social or educational projects that improve the lives of people who live in the Fund's area of benefit. The Southfields Community Fund has a very local focus and those benefitting from a grant must live within the defined area of Southfields.

- ▣ Supporting the local community
- ▣ Improving the lives of local residents

Online applications – www.londoncf.org.uk

Open for applications summer 2013

Other programmes

- Other programmes include:
 - Santander Social Enterprise Development Awards (currently closed)
 - Red Nose Day – Evening Standard Dispossessed Fund – to open in March 2013
 - The Rob Barr Charitable Fund - currently closed

Sign up to our e-bulletin @
<http://www.londoncf.org.uk>

Top tips for top applications!

Make sure you double check your application...

- ❑ Fits the funding criteria
- ❑ Is eligible
- ❑ Is complete – Part A (online), B and all supporting documents have been submitted.
- ❑ Up-to-date submissions to Charity Commission/ Companies House
- ❑ Correct legal status
- ❑ Good previous monitoring

Top tips for top applications...

!!!READ THE GUIDANCE NOTES!!!

GET SOMONE TO READ THROUGH

MAKE SURE THE BUDGET IS CORRECT

WHY, HOW, WHAT, WHERE, WHEN

What makes an application stand out?

- Excellent previous monitoring showing good results and learning
- Strong needs analysis/consultation and fit with the project to address the needs identified
- Ability to achieve is demonstrated by previous results/skills in place
- Case study/story – this will evidence your ability to address the issue and deliver results
- Different/innovative in approach – not always essential
- Effective partnership working
- Project responds to previous learning
- Good monitoring/evaluation plan – exceptionally important to show your results
- Sustainability and fit with wider organisational objectives
- Clear and concise
- Passion!

Any questions?

Contact Details:

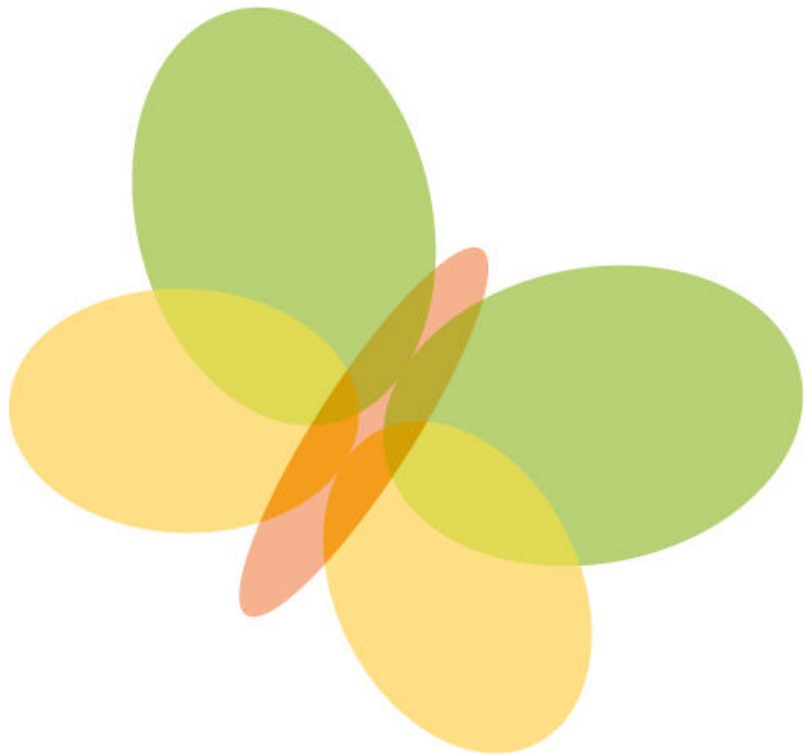
enquiries@londoncf.org.uk

cathy@londoncf.org.uk

www.londoncf.org.uk

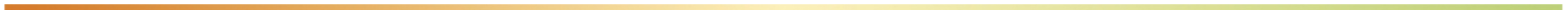
Tel: 0207 582 5117

**The London
Community
Foundation**

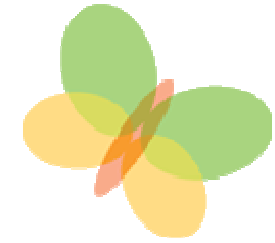


Localgiving.com
For charities and community groups

Anna Horsley & Richard Lemmer
The London Community Foundation



What is Localgiving.com?



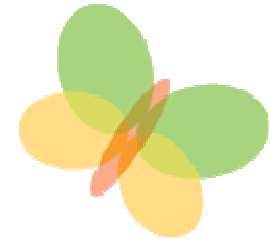
A not-for-profit website.

Mission: To provide local charities and community groups with the technology to **raise money, awareness and support online.**

Webpages and web tools necessary to;

- Reduce dependency on grants
- Provide new sources of funding and support
- Engage with their local community

Localgiving.com so far..



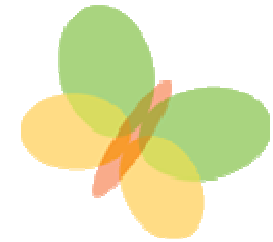
- Supporting charities and community groups across the UK
- Over 3000 charities and community groups on the website
- Over £3 million to charities and community groups since March 2010
- Successful regional and national Match Fund promotions



DRUM (Disability Recreation Unity Movement)

Disability Recreation Unity Movement, Parkgate Youth and Community Centre, Southwold Road, Watford, Hertfordshire, WD24 7DP

Make a donation →



Photos →



☆ Add charity to my favourites

Share this page



Examples of how your donation can help

£ 5.00 [Donate →](#)

provides an art canvas for art therapy group

£ 10.00 [Donate →](#)

Provides 2 pots of acrylic paint for art therapy session

£ 50.00 [Donate →](#)

Provides clay and glaze for our ceramic classes

£ 500.00 [Donate →](#)

Provides a wheelchair accessible coach for a day trip to the seaside or theatre

£ 780.00 [Donate →](#)

Provides a tutor, once a week, for 6 months

← Donation amounts

Activities & projects →

About this charity

Latest activities & projects

Day Trips and Social Events

Art Therapy Sessions and Art Materials

Yoga Therapy Sessions

'impARTial' Disability Awareness Sessions

'Passage to India' Art Project 2008/9

Angling Sessions

'Best of British' Art Project 2009/10

Providing day services and support to adults with physical and sensory disabilities and their carers

To provide high quality and affordable day services, activities and support to adults with physical and/or sensory disabilities and their carers living in Hertfordshire

Why the community needs this charity

DRUM provides an essential service to over 70 disabled adults and a regular day break to over 100 unpaid carers. DRUM is a unique group and is the only day service of this type in Watford and the surrounding areas.

Results and outcomes

DRUM is a user-led group. The majority of our management committee, volunteers and staff are either disabled or have personal caring experience which ensures that our services effectively meet the needs of our service users and the local community. Hertfordshire Care Providers Association Awards 2011 - DRUM announced as 'Team of the Year'

Main text →

Make a difference in your community



Make a donation →

Volunteers required Find out more →

Charitable causes tackled by this charity

- Physical Difficulties
- Unpaid carers
- Health and Wellbeing

← Volunteers

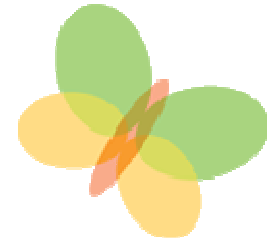
Charity information

Disability Recreation Unity Movement, Parkgate Youth and Community Centre, Watford, Hertfordshire, WD24 7DP

← Charity info



Benefits of joining



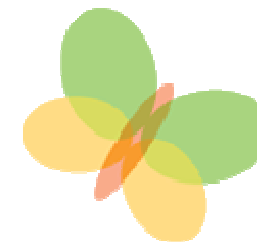
- Automated Gift Aid for registered charities and unregistered charities
- Can benefit from one off and direct debit donations
- Opportunity to benefit from future Match Fund promotions
- Supporter pages are coming soon – your supporters will be able to fundraise for you.
- Dedicated support from LCF and Localgiving.com
- Tailored fundraising webinars, tips and challenges

What are the costs of joining?

Localgiving is a leading competitor with other online giving sites (e.g justgiving/virgin giving), and is **the only** giving site which unregistered charities can join.

- **There is an annual fee of £72 a year (£60 + £12 VAT)**
- Works out at £6 per month, which is **less than £1.50 per week**
- There is also a very small transaction processing fee from donations. This goes towards providing a safe website so that you can give confidently and securely to validated groups on Localgiving.com.

How is a donation distributed?



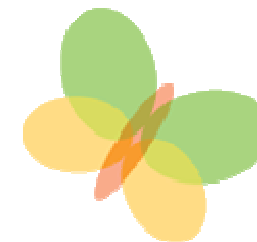
Fees:

- 2% for the average credit or debit card fee (1.4% + 20p)
- 2% to the local Community Foundation
- 3% to Localgiving.com

£30 DONATION EXAMPLE WITH GIFT AID:

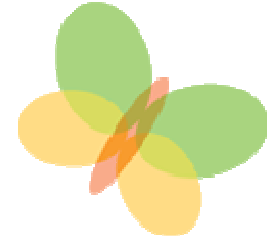
Donation	£30.00
- 2% average card fee	£ .62
+ 25% Gift aid	£ 7.50
- <u>5% CF/LG fees</u>	<u>£ 1.88</u>
- =	£35.00 to the Charity or Community Group

Benefits of Localgiving.com



For charities and community groups	For supporters
Facilities to easily accept donations	Support small charities that need your help the most
Automated Gift Aid on donations	Maximise your donation with Gift Aid
Webpages that are easy for supporters to find	Easily find and support charities by location, cause or the people you can help
New sources of funding , access to a community of supporters	Choose your favourite charities
Space to advertise your needs , including volunteer vacancies	Communicate directly with the charities you choose to support
Local and UK wide promotions	See how your donation is making a difference
Webpages that are easy to complete and update at any time	Send messages to charities and stay up-to-date with the latest news
Training materials and support to help you with your fundraising from LCF and Localgiving.com	Help charities raise awareness of their work

How does my organisation sign up?



Simply go to www.localgiving.com/charitysignup

You will then create your page and submit it. If you have been funded in the past 2 years by LCF you will just need to send in an original bank statement.

If you have not been funded, you will need to complete and return a validation form to Localgiving.com.

We're here to help!

If you have any questions, please contact:

Anna Horsley & Richard Lemmer
The London Community Foundation

Email: annah@londoncf.org.uk

richard@londoncf.org.uk

Telephone: 0207 5825117

